

PERFORCE login and setup:

Please keep this email.

Here is some needed information, for Perforce server.

Step 1/7: Perforce documentation.

- Read this first - Introducing Perforce
 - <https://www.perforce.com/perforce/doc.current/manuals/p4v/index.html>
- Read and enjoy

Step 2/7: Follow the instructions in Getting Started (very important)

Step 3/7: Download and install Perforce Visual Client P4V for windows

- Download P4V Helix Visual Client
 - <https://www.perforce.com/downloads/helix-visual-client-p4v>
 - Download and install the appropriate version for your OS (32bit or 64bit)
- IP and Port of the server:
 - In the dialog box: **140.192.39.61:1666**
 - IP: 140.192.39.61
 - PORT: 1666
- Follow the instructions from Getting Started on how to setup the P4V.
- Your Depot is called **//schrack2017fall_gam369/**

Step 4/7: Custom Cheesy DePaul Videos:

- Links to cheesy video on how to use perforce
 - [Configuring Perforce to Local Machine.mp4](#)
 - [Perforce Add Delete Files.mp4](#)
 - [Setting up P4V 2016.mp4](#)

Step 5/7: Login and passwords:

- Here's a list of everyone's login
 - Campus connect ID is used
 - Your default password is "doggy" (lower case)
 - **or your previous password if you had an active perforce account before**
 - If you need to reset it send an email to ekeenan2@cdm.depaul.edu
- Change your default password now
 - Click <Connection> <Change Password>
 - **Change your password**
- Update (fix) your user's data
 - Click <Connection> <Edit Current User>
 - **Reset your email to the correct one**
 - **Update your full name**
- User names:
 - acruz40
 - choye
 - dcoday
 - eclaudio
 - jewing8
 - jkuo3

- jmotton
- jsulli46
- lpeders2
- mdo1
- mgrenke
- nsangsaw
- sasmusse
- wbuesing

Step 6/7: Setup

- After logging onto perforce and setting up a workspace
- Do the following modifications to make the perforce environment work better

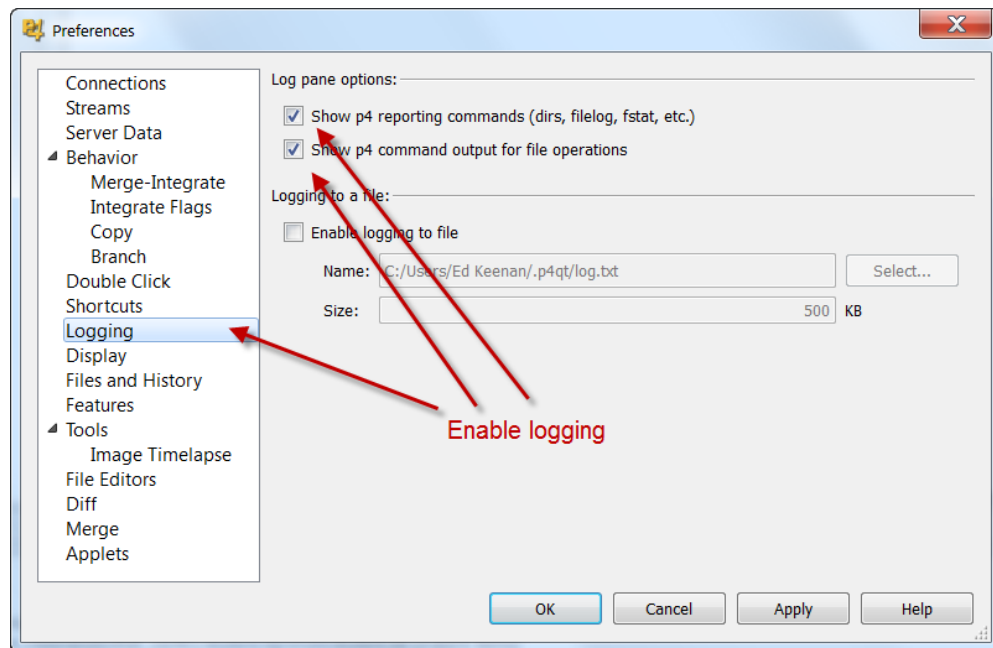
Perforce(1) - Modify your workspace please

Edit your workspace, go to the advanced tab
Especially the revert unchanged files

The screenshot shows the 'Advanced' tab of a workspace configuration dialog. The 'Owner' field is 'ekeenan'. The 'Description' field contains 'Created by ekeenan.'. The 'Host' field is 'ekeenan_mac15'. The 'Alt roots' field is empty. A red text box with the text 'Make sure these match these settings' has two red arrows pointing to the 'Revert unchanged files' dropdown menu and the 'Rmdir' checkbox. The 'File Options' section includes several checkboxes: 'Allwrite', 'Clobber', 'Compress', 'Modtime', 'Rmdir' (checked), and 'Automatically get all revisions'. The 'Line ending characters for text files' dropdown is set to 'Local: defaults to the current operating system'. The 'On submit' dropdown is set to 'Revert unchanged files'. The 'Check out submitted files after submit' checkbox is unchecked. The dialog has 'OK', 'Cancel', 'Apply', and 'Help' buttons at the bottom.

Perforce(2) - Enable logging

Go to Edit tab, choose preferences



Step 7/7: Read the perforce papers from the Perforce website (perforce.com).

→ *Seriously, please read them*

Enjoy.

Ed Keenan

ekeen2@cdm.depaul.edu